

# Log cabin Floor plan: 18'x 20' - 20'x 20' with loft, stairs, side entrance

## Included in kit:

Log frame; 4"x 7" logs tongue & groove with dovetails, wood stairs with railing, bath room log walls, second floor, porch and miscellaneous angle irons for doors and window cut outs and log screws.

**Price 18'x 20':** \$ CDN 22,670.00, FOB Prince George plus taxes where applicable

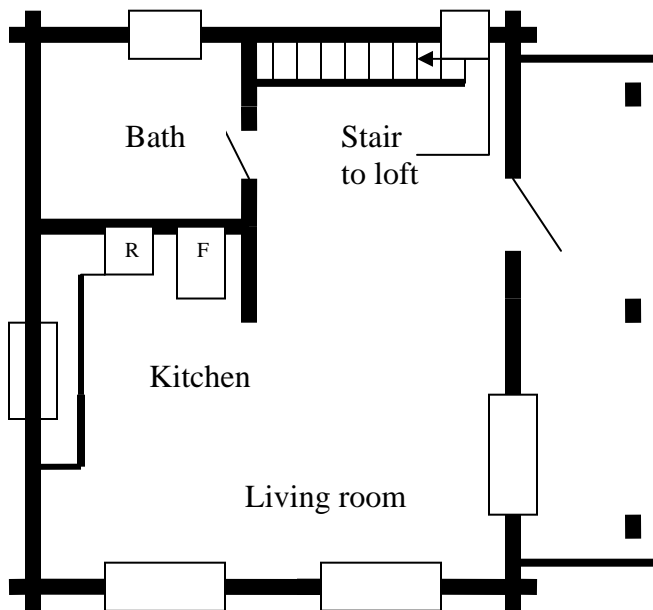
**Price 20'x 20':** \$ CDN 23,350.00, FOB Prince George plus taxes where applicable.

Price can change without notice.

**Roof:** Pre cut rafters 2"x 6", sheet metal roofing, pre cut 3/8 plywood, 1"x 4" strapping and miscellaneous screws, roofing nails and special hurricane cleats. \$ 3,400.00

**Doors & windows:** Vinyl sliding windows with screen, entrance steel insulated man door, interior pine door and miscellaneous bolts, nuts, screws and nails plus inside and outside trims . \$ 4,575.00

Floor plan: Main level



Floor plan: 2nd. floor

