

Cabin Floor plan: (18)20'x (20') 20' L-Shape with loft, stairs and porch
Included in kit:

Log frame; 4"x 7" logs tongue & groove with dovetails, wood stairs with railing, bath room log walls, second floor, porch post and beam frame and miscellaneous angle irons for doors and windows.

Price 18'x 20': \$ CDN 25,800.00, FOB Prince George plus shipping, handling and taxes

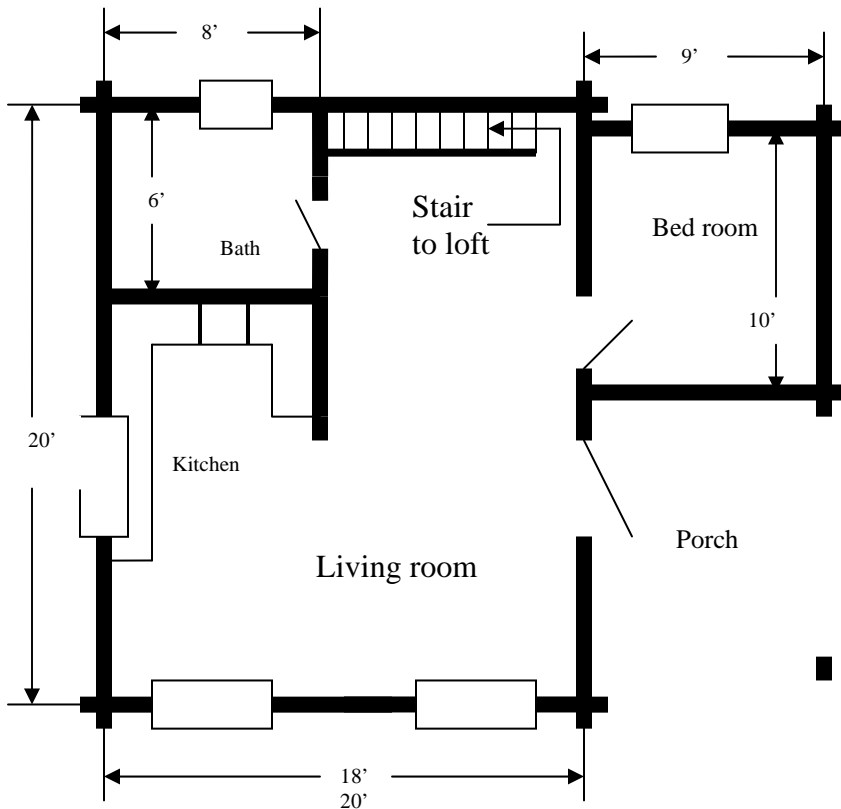
Price 20'x 20': \$ CDN 27,250.00, FOB Prince George plus shipping, handling and taxes.

Price can change without notice.

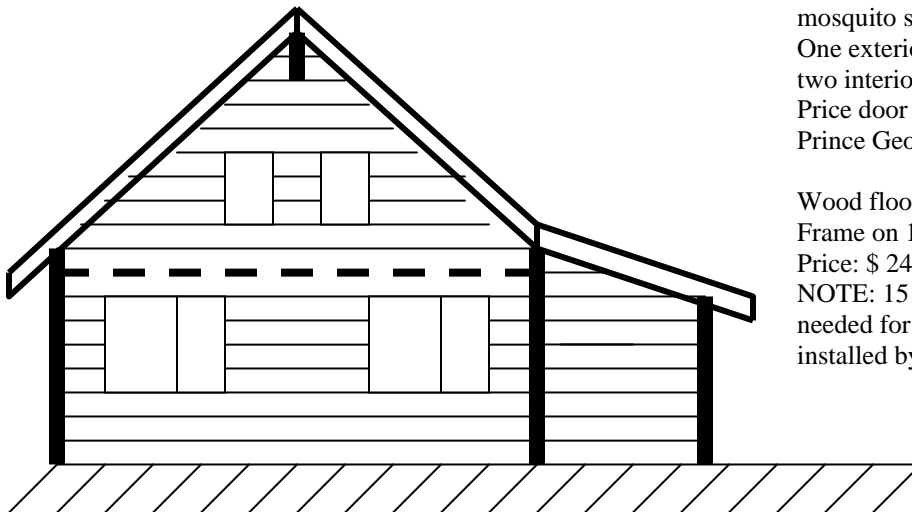
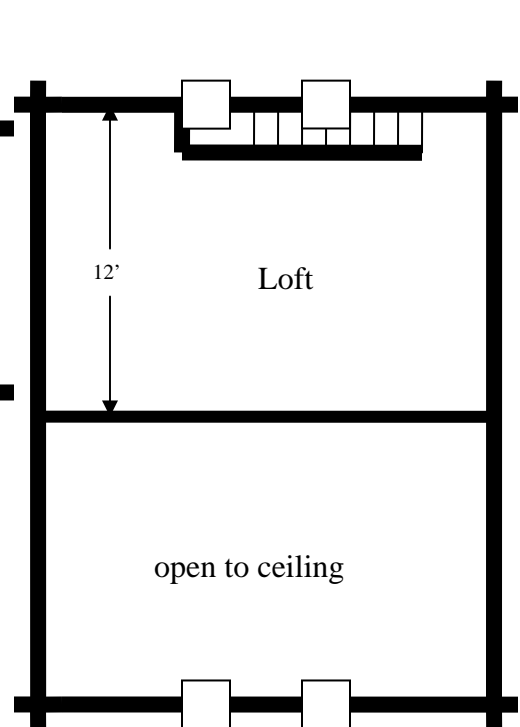
Roof: Pre cut rafters 2"x 8", 3/8 plywood pre cut, 1"x 4" strapping, fascia, sheet metal roofing, miscellaneous screws nails and special hurricane cleats.

Price: \$ CDN 4,190.00, FOB Prince George

Floor plan: Main level



Floor plan: 2nd. floor



Windows: Vinyl sliding windows with mosquito screen as per drawing.
 One exterior steel insulated man door and two interior pine doors.
 Price door & windows: \$ 5000.00 FOB Prince George, BC.

Wood floor: consisting of 5 beams and 2x8 Frame on 16" centers with 5/8 plywood.
 Price: \$ 2450.00.

NOTE: 15 pillars or concrete block are needed for wood floor and have to be installed by customer.